

## About the cause of generating and application of a tornado

2011.SEP.15 First edition  
Gravity Engineering Corporation  
CEO Takashi Tsuda

### **1. Introduction**

Why do a tornado and a typhoon generate that immense energy? It will be wonderful if it stops and thinks. Even if it investigates a cause, it is considered as the mystery. Although a tornado is a serious, old physical phenomenon probably known from prehistory, even if the cause of generating of a tornado is a mystery, not a mystery but everybody knows the existence. It seems that thus, leaving a mystery what is known also by whom for years is blamed for the limit of human beings' capability.

If the cause of generating is solved, some immense energies may be able to be taken out. This is solved not a problem but the problem which should be solved. Nobody is a nature owner. It is not desirable that the problem is neglected, although it may be meddlesome. If a scholar cannot solve, it will be that the human being who can solve should just do.

As long as it says a conclusion previously, you may say that the mystery was already solved. There is also the concrete method of taking out the energy according to engineering structure. This document reconstructs the main point of the document already opened to the public. First of all, I will consider theoretically and will describe the application method after that. In order to avoid unnecessary difficulty so that you can understand without the knowledge of physics, a numerical formula expression does not use.

### **2. Centrifugal force**

If an object is rotated, centrifugal force will work. Energy is not needed for centrifugal force continuing applying power to an object. If the rotating disk has neither air resistance nor mechanical resistance, continuing turning forever is known widely. Then, the earth is continuing turning. On the rotating disk, the power of centrifugal force is always continuing being applied.

An object will be accelerated if power is applied to an object. If an object accelerates, kinetic energy will increase. If the power of centrifugal force is added, it will accelerate and kinetic energy of an object will increase.

Although centrifugal force has the theory that it is not real power, by fictitious force, since there is proof of a centrifuge which exists really, it is not the target of an argument, either. Centrifugal force is real power unquestionably.

If it collects

- Centrifugal force is real power.
- If power is applied, it will accelerate and kinetic energy of an object will increase.
- Energy is unnecessary although it continues producing centrifugal force.

The conclusion obtained from this

The centrifugal force cannot need energy but can accelerate an object.

### 3. The gravitational field which accelerates an object eternally

There is a circular circumference way as shown in Fig. 1, and suppose that initial velocity zero drop an iron ball in the direction of B point from A point. An earth's gravity field accelerates, an iron ball becomes the maximum speed at C point, the same speed as the time of passing along B point by D point slows down, and speed becomes zero when returning to A point. (Fricative resistance is disregarded.)

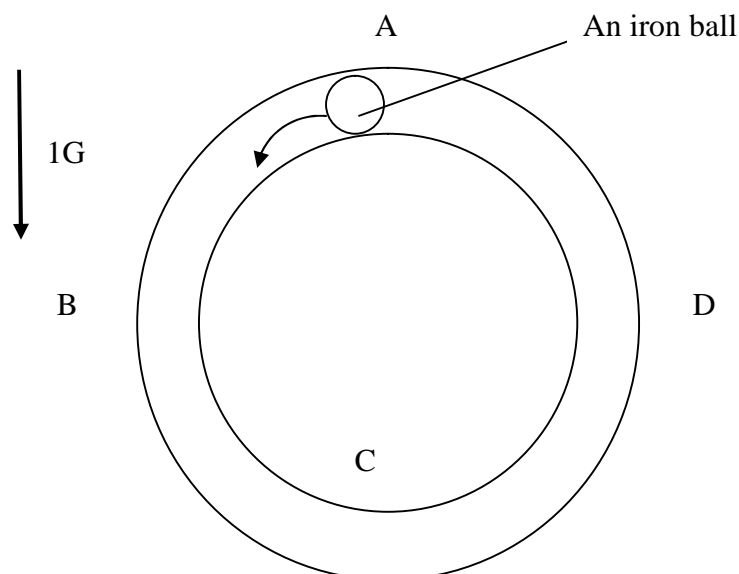


Fig. 1 Falling motion on the circumference in an earth's gravity field

Next, as shown in Fig. 2, the left-hand side of AC has the gravity of 1G, and right-hand side considers the place which is 0G.

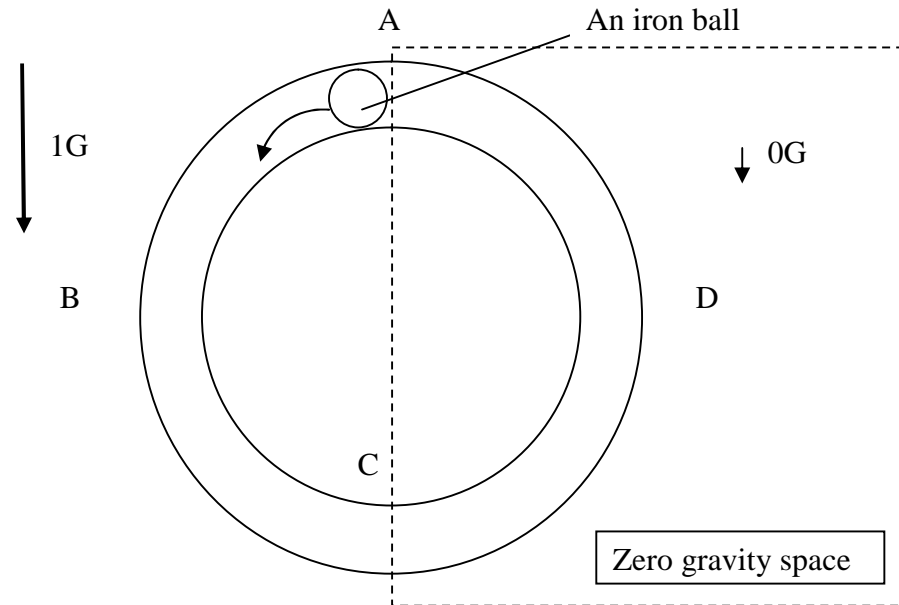


Fig. 2 Falling motion on the circumference in the mixture space of 1G and 0G

If initial velocity zero drop an iron ball in the direction of B point from A point, it is the same as that of Fig. 1 to become the maximum speed at C point, but also when it passes along D point, the maximum speed  $V$  when it passes along C point is maintained. A point is reached at the speed  $V$  as it is. an iron ball will not stop at A point, it will be accelerated towards C point from the speed  $V$ , and the speed of an iron ball of this circumference way increases infinitely. If an objective speed increases infinitely, the kinetic energy also increase infinitely.

Although the place as shown in Fig. 2 did not exist on the earth's gravity field, when there was a place of such an easy structure, it was shown that energy can be taken out infinitely.

#### 4. The centrifugal force field which accelerates an object eternally

An earth's gravity field and the gravitational field by centrifugal force negate mutually the space station which is turning around the surroundings of the earth, and the inside has become zero gravity space. Probably, the difference will essentially be the same, since it cannot be distinguished at all but can be compounded.

Thus, it is known well that it is possible to produce an earth's gravity field and the same gravitational field artificially by centrifugal force.

A space as shown in Fig. 2 can be artificially made, if centrifugal force is used. What is necessary is to apply centrifugal force in section ABC and just to make it not apply centrifugal force in the section CDA.

Since local gravitational field space can be made if centrifugal force is used, the object in the low position of potential energy can be moved to the high position of potential energy without using energy.

If it is made such, energy can be infinitely taken out from the place of centrifugal force.

## **5. The cause of generating of a tornado**

The component of a tornado is very simple. There are the air to rotate and the ground and there is other earth gravity.

The wind of a counter direction collides by a certain cause, and if air rotates and it becomes a whirlpool, since centrifugal force will work to air and it will be carried outside, the atmospheric pressure near the vortical center falls. The portion of the eye of a typhoon becomes a strong low pressure.

Usually, air flows into the lower one from the one where atmospheric pressure is higher. Since atmospheric pressure becomes low in the eye of a typhoon and, as for the surroundings of it, atmospheric pressure becomes high relatively, the centripetal force which flows towards a center works to the surrounding air of a typhoon.

Centrifugal force accelerates air, and the centripetal force by an atmospheric pressure difference draws near the wind which has maintained the quantity of motion of the accelerated air near a center where the potential energy of the field of centrifugal force is high. There is a law of conservation of angular momentum, since quantity of motion is saved when the object which was turning around the perimeter is moved to inner circumference with a small radius, it tries to move at the same speed and number of

rotations increases. For example, when the object which was turning around the perimeter of the radius  $2R$  at 1 time of speed in 1 minute is moved to the radius  $1R$ , it will turn at 2 times of speed in 1 minute. Since an object moves the same distance as the same time by being set to  $2\pi R$  by  $4\pi R$ , and quantity of motion being saved, since the circumference of this is  $2\pi R$ , the perimeter will turn around inner circumference 2 round.

If it is the same quantity of motion when an object moves to the point B from the point A on the radius  $2R$  between the time T, as shown in Fig. 3, I hear that an object moves to the point D from the point C on the radius  $1R$  between the time T, and since speed is only the same, I hear that the distance of the arc AB and arc CD becomes the same, and there is.

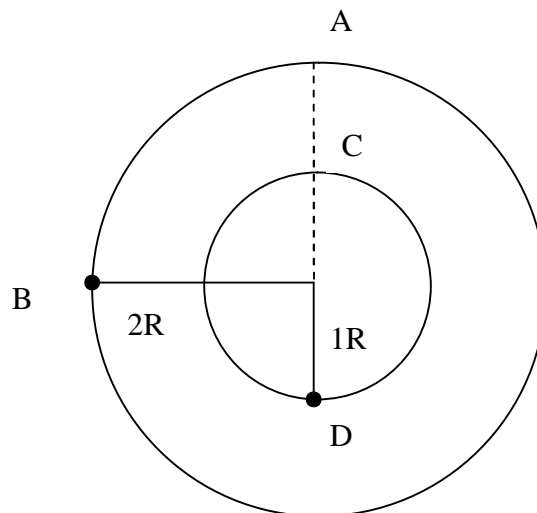


Fig. 3 Conservation of angular momentum

If there is a whirlpool of disk-like air, it is turning also around the perimeter and inner circumference at the same number of rotations. If the air which was turning around the perimeter moves to inner circumference, air quicker than the flow of the air which was turning around inner circumference before it will be sprayed, and the air of inner circumference will be made accelerated.

If the air of inner circumference is accelerated, centrifugal force will increase and energy will increase. By it, the atmospheric pressure near the axis of rotation of the eye of a typhoon will fall more, and also increases centripetal force. By this chain, the

energy of a tornado or a typhoon carries out self-amplification and comes to have that immense energy. Self-amplification of such energy will be called the tornado effect.

## 6. Structure of perpetual motion

perpetual motion is an engine which outputs energy eternally.

Since theoretical backing of perpetual motion was clarified, I will explain the structure of concrete perpetual motion invented next. This structure is called the tornado engine.

Fig. 4 is a side view which cut and lacked the tornado engine.

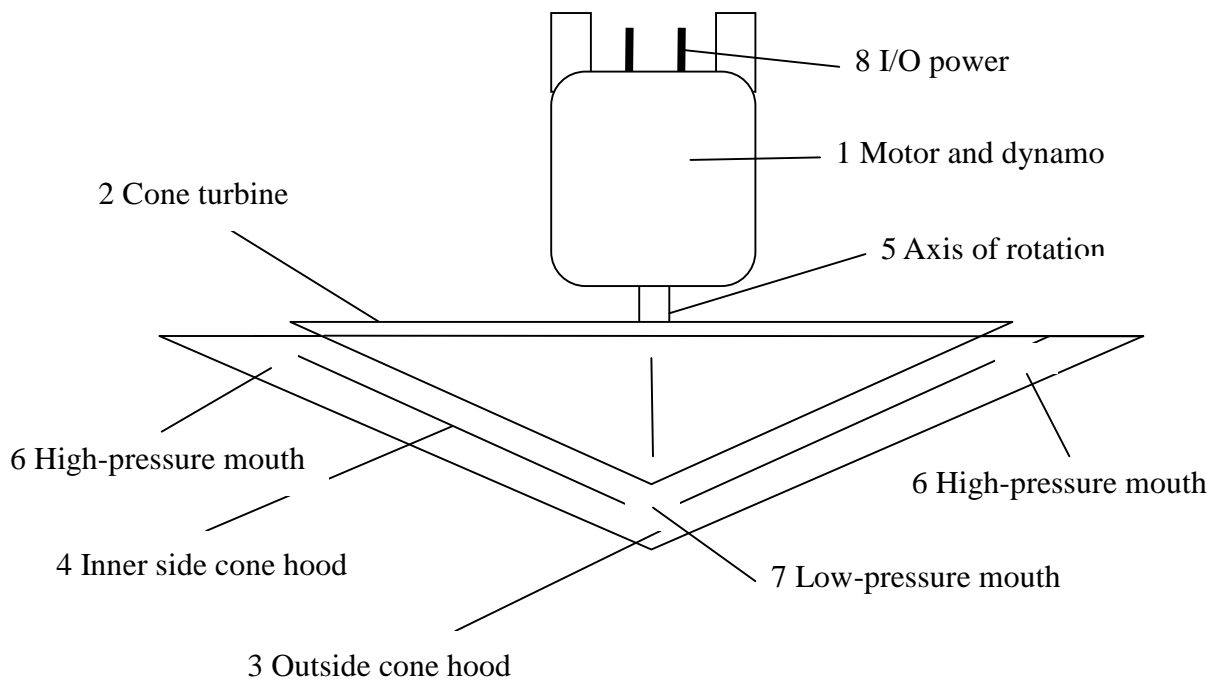


Fig. 4 Structure of a tornado engine

Working as a dynamo is as follows.

- (a) Pour in initial energy from the outside from I/O power (8), and start a motor (1).

The axis of rotation (5) which generates centrifugal force is rotated.

- (b) By rotating the axis of rotation (5) which generates centrifugal force, a cone turbine (2) begins to move, the air around a cone turbine (2) also aligns, and rotates, centrifugal force arises, and air is forced outside. The forced air is transmitted to the side wall of an inner side cone hood (4), it is brought together in the high-pressure mouth (6) side with a larger radius, atmospheric pressure goes up, and, as for a low-pressure mouth (7), atmospheric pressure falls.
- (c) The air made high pressure by centrifugal force is discharged from a high-pressure mouth (6) with the kinetic energy accompanying rotation, is transmitted to the side wall inside an outside cone hood (3), and flows into the low-pressure mouth (7) which became low pressure by centrifugal force. Air flows into the lower one from the one where atmospheric pressure is higher.
- (d) The air near a high-pressure mouth (6) has the migration length larger than the air near a low-pressure mouth (7) per unit time. That is, the direction near a high-pressure mouth (6) is a high speed more near a low-pressure mouth (7). Since the flow velocity of the air which flowed out of the high-pressure mouth (6) is maintained except for resistance according to the law of quantity-of-motion preservation also while it is transmitted to the inner side of an outside cone hood (3) and flowing, the flow velocity at the time of flowing out of a low-pressure mouth (7) is quicker than the speed of a cone turbine (2). It is sent out while a quicker wind rotates from a low-pressure mouth (7), and the air near a cone turbine (2) is accelerated according to the viscosity of fluid, and the revolving speed of a cone turbine (2) is made to increase.
- (e) If the revolving speed of a cone turbine (2) increases, centrifugal force also increases, an atmospheric pressure difference will also become large and its flow velocity of air will increase. If the flow velocity of air increases, the revolving speed of a cone turbine (2) will increase further, and it does in this way, and revolving speed carries out self-amplification continuously.
- (f) Even if it stops the electric power supply from the outside to a motor (1) according to the phenomenon of (e), rotation resistance can be appropriately changed by consuming the electric power from the motor used as a dynamo (regenerating brake), and the revolving speed of the axis of rotation (5) can be kept constant. Henceforth, a motor (1) is used as a dynamo and taking out electric power to the exterior can be continued.

## 7. Impelling force in space

There is a by-product with one more in a tornado engine. It rebounds in the direction which is different when a ball is thrown at a slanting board. (Fig. 5)

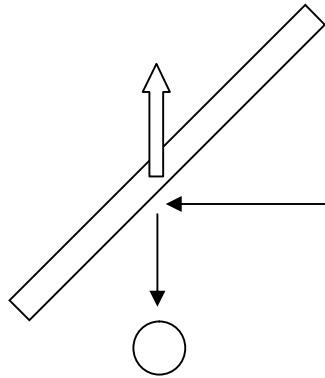


Fig.5 A ball is applied to a board

Power works to the side opposite which rebounded upon the board by the reaction to. The windmill uses this phenomenon. If it supposes that there is a cone type board and the power to the outside works equally in a transverse direction from the center, a cone type board will go up. (Fig. 6)

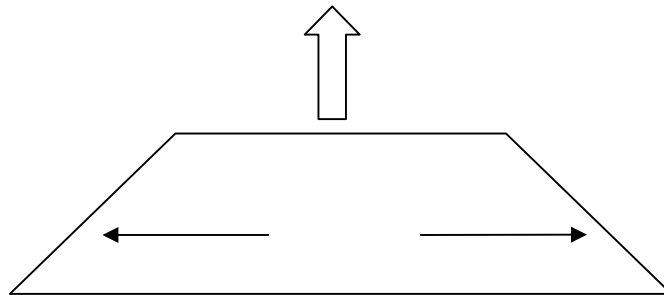


Fig.6 Power committed to a cone type board

The power to the outside by centrifugal force is always applied to the cone type hood of a tornado engine. Power works towards the smaller one from the one where a radius is larger also on the cone type hood of a tornado engine. This power turns into impelling force to which the whole tornado engine is moved.

This impelling force has the completely different characteristic from the existing



propeller, a jet engine, and the promotion engine of the system which spouts something like a rocket engine. It can be made to go up, without making breeze around. On the whole, it is air cooling or a water cooled system, and since nothing is burned, heat hardly occurs, either. It not only does not use fuel, but it promotes, generating energy. Since fuel is not used, it is infinite, and do not attract no cruising ranges, and they are discharged but the universe and an underwater cruise are possible for them.

The simple method of the moving direction control can install three tornado engines in the vertex of an equilateral triangle, and it can make it exercise in all the directions of rotation, an inclination, and a stop before and after four directions by changing the direction of each engine independently. (Fig. 7)

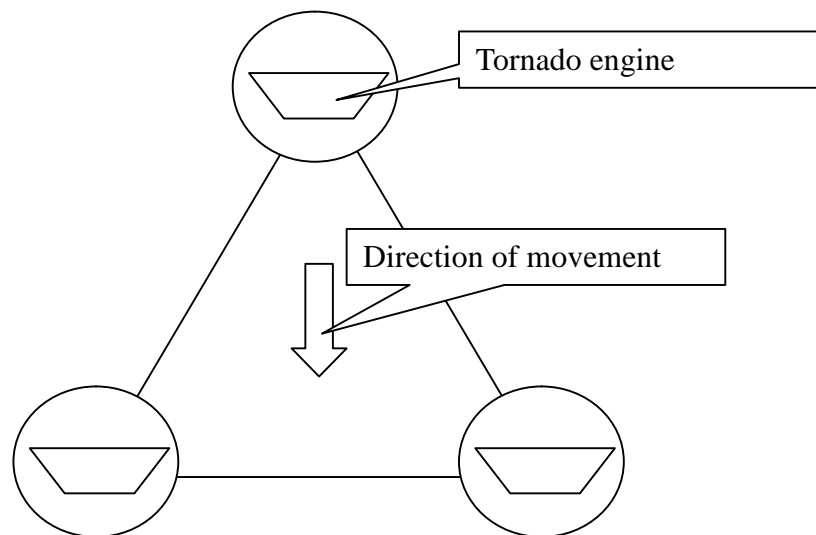


Fig.7 Equilateral triangle type direction-of-movement control

## 8. Conclusion

In the time before Kepler, it was thought that a planetary orbit was not an elliptical orbit but a circular orbit. Nature has not become like a scientist's ideal, a wish, or a belief. Many show that the law of the conservation of energy by the philosophy that nothing comes of nothing is right as an experimental result. since the right thing was proved in the experiment, it is right that it is admitted that the natural laws are right -- although it thinks and comes out, even if partially right, not all are necessarily right. It is thought that there is a potential bug in complicated computer systems. It is an example which cannot be altogether referred to as right even if it is operating satisfactorily in

many cases.

Especially the law that is extended to a strange field and includes the opinion that it is materialized contains the element which cannot be proved. Nobody can prove a strange thing. Since human beings do not know all natural phenomena, you have to know that the law extended to the strange field is a hypothesis forever.

There is an exception in the law of conservation of energy. The perpetual motion is possible.

The law of conservation of energy needs to be corrected. It stands to reason that corrects a wrong thing. Refusing an improvement does not correct a mistaken thing and it does not progress at all in such a thing. If it cannot be adapted for environment, human beings will be dismissed.

If we all have a right law of conservation of energy, it will have been educated, but a famous scholar is also man and anyone has an error. First of all, it is a hypothesis which a theoretical physicist says and it was not confirmed in an experiment. It does not have the firm belief of a theoretical physicist itself as having said the right thing from the beginning. Since he wants an experimental physicist to confirm, such a thing is said. Since the famous scholar has said such a thing, the direction it is believed firmly that is right firmly is mistaken.

There is a time when many people believed the say theory whose brain cell does not increase and which is decreasing steadily. It is denied in the present age. It is such a thing which a scholar says. There is no a scholar being malicious and deceiving and such a way is their academic means. It is an error to blame a scholar as having been deceived.

Riding in the fuel-inefficient car till these days had the guilty feeling which is destroying global environment. Since the global warming issue was solved, such a guilty feeling is unnecessary any longer. It will be said that solution of energy or an environmental problem may use oil positively rather. Change advances gradually and oil will be used for dozens of years from now on. The vested rights and interests of oil do not become meaningless immediately, and I do not think that it is uneasy. Agriculture can be performed now also at the place which was unsuitable for agriculture, such as a

desert and a cold district. The desert area which occupies much area on the earth becomes the land which is full of green. There is sufficient transition period in oil producing countries.

Many of issues involving an energy problem, an environmental problem, population explosion, a food crisis and poverty, and a territory for which it should fight and which these human beings should solve are solvable if there is inexhaustible and pollution-free cheap energy.

If a night sky is looked up at, the vast universe spreads out. Ultimately, all the big issues of the earth originate in the earth having become small for human beings too much. All are solvable if human beings can reclaim the universe. It is desperate and it becomes unnecessary to fight over narrow land. It has already started industrially and is not a talk of the far future.